

Think GAIA

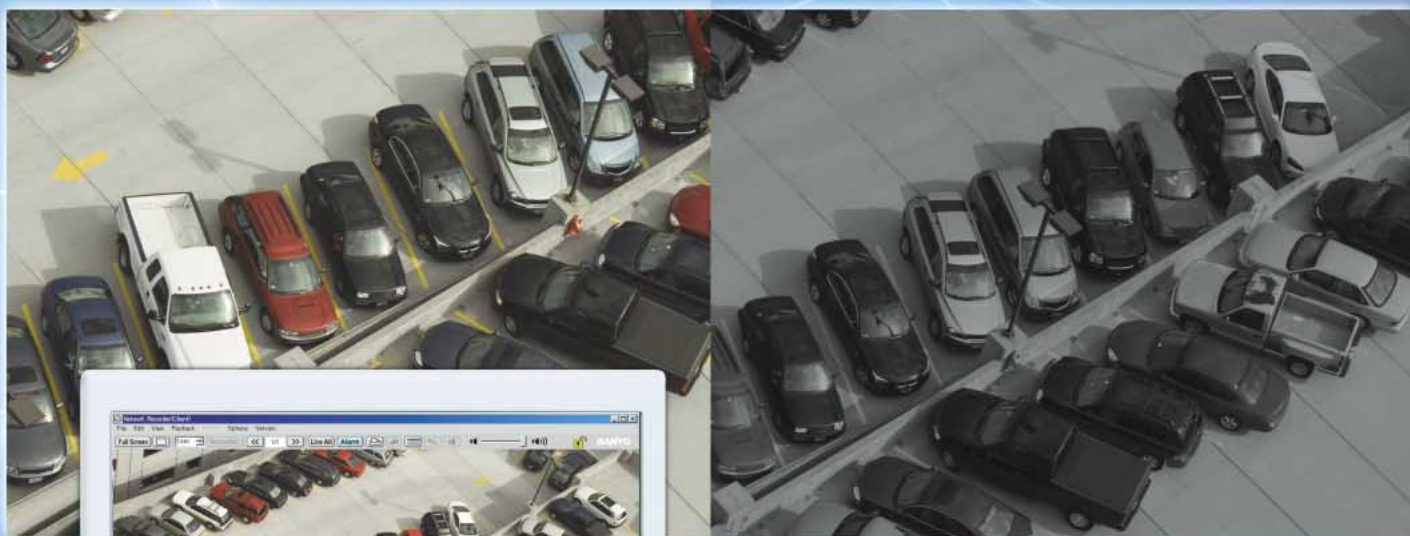
For Life and the Earth

SANYO

1/3" Color CCD Network High-Resolution Camera

VCC-N6584

- Dual codec: H.264/JPEG Network
- High-resolution technology, 540 TV lines of horizontal resolution
- Electronic Day/Night function
- High sensitivity (F1.2 B/W mode) — minimum illumination of 0.25 lx (50 IRE) or 0.1 lx (20 IRE)
- Triple power supply:
12 to 15V DC / 24V AC, 60Hz / PoE



E-DAY NIGHT
Electronic Day/Night function

0.25lux
High Sensitivity

Super-High Resolution
540-TVL

A network camera for a wide variety of security or distance surveillance applications for offices, stores, parking lots, etc., offering clear surveillance images at any time of day or night.

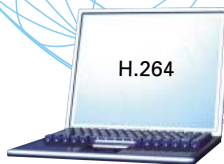


Network Performance

Dual Codec for H.264 and JPEG

Monitoring can be conducted simultaneously in H.264 and JPEG formats by minimizing network traffic.

- H.264 ActiveX Plug-in required (bundled).



Transmission using 2 types of codecs (H.264 and JPEG) is possible.

For video compression, H.264, optimized for transmission of moving images over a network with low bit transfer rates, is used to enable real-time high image quality monitoring, and for still images JPEG is used to offer high image quality in a common image format. Monitoring can be performed according to the user's application, so that any important scene is not missed.

Newest H.264 high-compression technology

H.264 compression enables distribution of images at approximately 1/10 the file size of JPEG compression (according to our comparisons) while maintaining the same image quality.

For customers, this means a major reduction to approximately 1/10 compared to the storage capacity required for the JPEG compression previously used, resulting in cost savings due to the smaller required capacity. In addition, if the same capacity is used, the previously limited resolution and refresh frequency can be increased, which can contribute to both high image quality and high recording speed.

E-mail function

A setting for automatic sending of mail (up to 5 addresses can be set) is provided. By using this setting, an alarm notification e-mail can be set when an alarm is detected. Or, e-mails can be sent at regular intervals. In either case, an image can be attached to the e-mail.

Access log

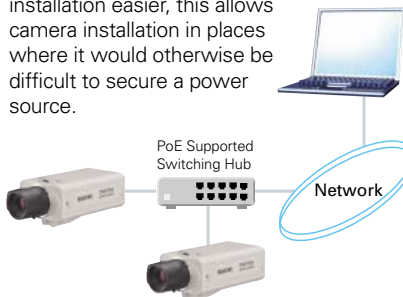
Simultaneous access is possible for up to 16 people. When the camera is accessed via the network, the most recent date, time, and IP address are recorded in the log, making management and analysis more convenient.

Schedule setting

Timer sending or alarm notification can be performed during a specified time period. The following 5 functions are provided: TIMER (SMTP) for timer sending of e-mail, TIMER (FTP) for timer sending of images via FTP mode, ALARM (SMTP) for e-mail notification of an alarm, ALARM (FTP) for sending of alarm images via FTP mode, and REMOTE ALARM "ACTIVE" for enabling camera alarm output 2 by remote operation.

Power-over-Ethernet (PoE)

VCC-N6584 support the IEEE 802.3af standard for Power-over-Ethernet (PoE) applications to allow power to be supplied over LAN cabling. In addition to making installation easier, this allows camera installation in places where it would otherwise be difficult to secure a power source.



Security

Access can be controlled with 2 ID levels, ADMIN and GUEST, both requiring their own passwords. SSL compatibility is also provided, enabling a safe, comfortable solution.

Electronic Day & Night Function (E-Day/Night)

The new E-Day/Night function allows an automatic changeover from color mode to B/W mode. This makes it possible to achieve 24-hour high quality in light and dark conditions.



Image from conventional camera



Image from E-Day/Night camera

High Sensitivity

Sensitivity has significantly increased by about 3dB compared to conventional models. A newly-developed CCD sensor partners with SANYO's advanced technologies to enable the camera to clearly capture objects even in dark conditions.

High Resolution of 540 TV Lines

SANYO has improved the horizontal resolution to 540 TV lines (typical) by developing the full capability of CCD and using an IR cut filter with enhanced performance. The result is better picture quality, which even a conventional high-resolution camera cannot match.

Minimum illumination

Minimum required illumination of 0.25 lx (50 IRE) or 0.1 lx (20 IRE) with F1.2 lens (B/W) at high gain.



ce

Saving of settings

Menu settings optimized on site can be saved for peace of mind.

Motion Sensor Function

This function allows up to 2 areas where motion of subjects should be monitored by the camera itself.

By lessening the work of the observer, the load on the observer and operating costs can both be reduced. The desired area can be selected from a range of 64 sections.

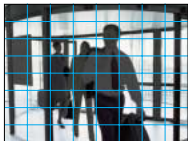
Motion Mask Function

This function is basically the inverse of the Motion Sensor Function. Sensing is performed over the entire camera range of view, and areas where motion sensing should not be performed can be set. It also lessens the work of the observer, enabling both the load on the observer and operating costs to be reduced. The sensitivity of the detection area and the time period can also be set.

Two types of backlight compensation selectable.

Multi-spot photometry system:

Luminance is measured in 64 separate areas for optimum backlight compensation even for peripheral and moving objects. This system features selectable normal and high modes.



Conventional camera



VCC-N6584

Center-zone photometry system:

Luminance measured at center and automatic lens aperture adjustment enables a clear image even when backlit.

Other Features

- TTL auto tracing white-balance system
- Equipped with electronic iris (indoor use)
- Internal / synchronisation system
- DC type auto iris lenses applicable

Software

Network recording software

VA-SW3050S (for server) /
VA-SW3050C (for client)

The VCC-N6584 is bundled with VA-SW3050LITE viewer software allowing live video streams sent from cameras to be monitored on a PC.

The network recording software VA-SW3050S / VA-SW3050C (sold separately) is an application program that extends the network operation of the camera. By installing this software, it is possible to monitor images from multiple cameras on a split screen and access and operate up to 128 cameras over a network. VA-SW3050S further offers the convenience of recording live images and alarm/timer functions. It is an exclusive software package for the VCC-N6584.

Live images from a single camera can be viewed on a PC using Internet Explorer* (ver. 6.0 or higher). To view live images from multiple cameras, install the included VA-SW3050LITE viewer software.

*ActiveX installation is required.



Main window (Internet Explorer)



16-screen display (VA-SW3050LITE / VA-SW3050C)



VMS capture display image



VP capture screen image

SANYO Video Pilot* (VP)/Video Management Software (VMS)

VA-VP200* / **VA-SW50** (Advanced)
VA-VP300* / **VA-SW60** (Enterprise)

"SANYO Video Pilot*/Video Management Software" is a software management platform for SANYO's VCC-N6584 and IP cameras, most of the industry's standard IP and megapixel cameras and encoders, several of the major video capture card codecs, and SANYO's embedded DVRs. Video Pilot / Video Management Software is an NVR, PC DVR and embedded DVR control platform with total integration all under one software application.

*Only for North America

• Please visit "sanyosecurity.com" for further details.

Feature Comparison

	Internet Explorer*1	VA-SW3050 Series			VP*/VMS	
		Lite	Server	Client	Advanced	Enterprise
		VA-SW3050Lite Bundled	VA-SW3050S	VA-SW3050C	VA-VP200*/SW50	VA-VP300*/SW60
No. of cameras supported	1	Max. 128			16	unlimited
Live Monitor	✓	✓	—	✓	✓	
Camera Control	✓	✓	—	✓	✓	
Video Recording	—	—	✓ (JPEG only)	✓	✓	
Playback	—	—	—	✓	✓	
Video Search	—	—	—	✓	✓	
Download from PC/Print	—/—	—/✓	—/—	✓/✓	✓/—	
Camera Setting	✓	—	—	—	—	
MegaPixel Camera	✓	✓	✓	✓	✓	
DVR Connection	—	—	—	—	✓	

System Requirements

PC	IBM PC/AT and compatibles			
OS	Windows® XP Professional SP2, Windows® Vista, Windows® Server 2003 SP2 (SW3050S only)			
CPU	Core2Duo E6700, 2.66GHz or higher*2	Core2Duo E6700, 2.66GHz or higher*2	Pentium IV, 3.0GHz or higher	Core2Duo E6700, 2.66GHz or higher*2
Memory	1GB (Windows® XP) 2GB (Windows® Vista)	1GB (Windows® XP) 2GB (Windows® Vista)*2	1GB or more	1GB (Windows® XP) 2GB (Windows® Vista)*2
Network Interface	100Base-TX			
Display Card	1920 x 1200 pixels or higher		1024 x 768 pixels or higher, 16m color	
Graphic Chip	SD (Compo)	ATI: Radeon X1000 series or higher	nVidia: GeForce 6000 series or higher	
Audio	— Sound card with 100% Direct-X compatibility and speakers*4			

*1 Ver. 6.0 or higher *2 When the number of cameras connected is 4 or fewer

*3 When the number of cameras connected is between 5 and 16

*4 The camera main unit is not equipped with audio functions.

*For Full-HD display

*Only for North America

Note: Depending on your computer's performance or network environment, the system may enter the busy state if the PC is connected to many H.264 video channels. If a warning message appears in the dialog box, decrease the number of the connected H.264 video channels.

SANYO Software Development Kits (SDK)

SANYO now offers two types of SDKs to help the user develop applications suitable for particular needs or for more compatibility with network devices and software from different vendors. *For further information of the SDK, please contact the nearest SANYO representative.

Specifications

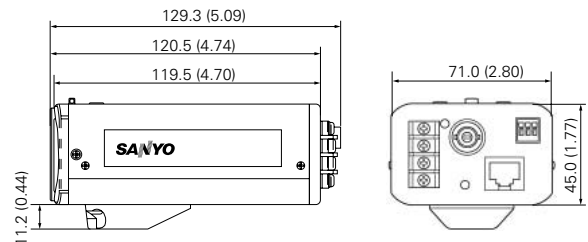
Model No.	VCC-N6584	
Scanning system	NTSC standard 525 lines, 30 frames/sec.	
Image sensor	1/3" interline transfer method CCD	
Effective picture elements	768 (H) x 494 (V)	
Horizontal resolution	540 TV lines (Typical)	
Minimum illumination (approx.)	50 IRE	0.35 lx (at F1.2, at color), 0.25 lx (at F1.2, GAIN: ON, at B/W)
	20 IRE	0.14 lx (at F1.2, at color), 0.1 lx (at F1.2, GAIN: ON, at B/W)
Video output level	1.0 V (p-p) / 75 ohms, composite	
Video S/N ratio	More than 50 dB (AGC off)	
Backlight compensation	ON / OFF — Slide SW (side) / IE menu	
	ON = Multi-spot photometry [2-mode (Normal/High)] / Center-zone photometry system — Slide SW (side) (activated when auto iris lens is used)	
White balance	ATW (Auto) / MWB (Manual) — Slide SW (side) / IE menu MWB: Adjustable R & B-Gain	
Light control	Optical auto iris lens / Electronic iris (indoor use)	
Lens mount	CS/C mount (C mount: using C-mount adaptor, sold separately)	
Flange back	12.5mm ±0.5mm adjustment	
Auto iris lens	DC type (Variable DC level)	
Auto iris output	DC: Drive coil (+, -), Brake (Damp) coil (+, -) — Slide SW (side) / IE menu	
Lens iris level	LEVEL: L to H — VR (side)	
Electronic iris range	Color	0.35 to 50,000 lx (with F1.2 lens) at Color
	B/W	0.25 to 50,000 lx (with F1.2 lens) at B/W
Aperture correction	High/Normal — Slide SW (side) / IE menu	
Day/Night	ON/OFF – SW (ON: Electronic-Day/Night / OFF: Color)	
Alarm	Input (1) / Output (1), NO / NC switch - IE menu	
Motion detector	Detect/Mask/OFF, - IE menu	
Synchronizing system	Internal sync	
Sockets	Video signal	VIDEO OUT — BNC (rear)
	Auto iris lens	LENS — 4-pin (side)
Power supply	24V AC, GND	— 3-pin terminal (rear)
	12 to 15V DC, GND	— 2-pin terminal (rear)
LAN	RJ45	
Alarm	NO/NC	
Operating conditions	Operating	Temperature: -10°C to 50°C (14°F to 122°F), Humidity: within 90% RH
	Storage	Temperature: -20°C to 70°C (-4°F to 158°F), Humidity: within 70% RH
Power requirement	24V AC, 60 Hz / 12 to 15V DC / PoE (IEEE802.3af)	
Power consumption (approx.)	7.1 W	
Camera mount	1/4" – 20 UNC (top/bottom selectable)	
Dimensions (approx.) (excluding protrusions)	W	71 (W) x 45 (H) x 119.5 (D) mm
	H	2.80 (W) x 1.77 (H) x 4.70 (D) in.
Weight (approx.)	350g (12.3 oz.) (without lens)	

Network Specifications

Image compression	H.264 / JPEG	
Resolution	H.264	720 x 480, 352 x 240, 176 x 144
	JPEG	720 x 480, 720 x 240, 640 x 480, 360 x 240, 176 x 120
Picture quality	5 levels	
Frame rate	H.264	Max. 30 IPS (@: 720 x 480)
	JPEG	Max. 30 IPS (@: 720 x 480)
Bandwidth	128, 256, 512 Kbps, 1,2,3,4 Mbps, no limitation Selectable	
Alarm buffer	Up to 8 MB; configurable	
Interface	10BASE-T/100BASE-TX, PoE (IEEE802.3af) compatible	
Protocols	TCP/IP, UDP, HTTP, HTTPS, SMTP, NTP, DHCP, FTP, UPnP, DDNS	
Simultaneous access	Max. 16 (ADMIN: only 1)	
Security	BASIC authentication (ID/password), SSL supported	
Accessories	CD-ROM (VA-SW3050LITE, Active X, Manual)	

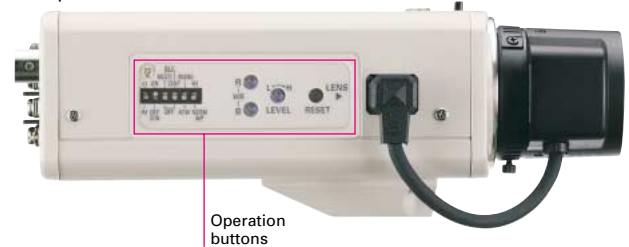
Dimensions

Unit: mm (inch)

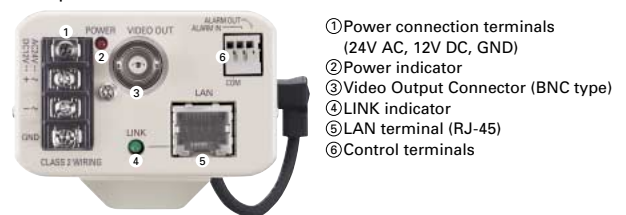


Controls

Side panel



Rear panel



Optional Accessories (sold separately)



Network Recorder
VA-SW3050S
 for server PC
VA-SW3050C
 for client PCs



Video Pilot* (VP)
VA-VP200*
 (Advanced)
VA-VP300*
 (Enterprise)
 *Only for North America



Video Management Software (VMS)
VA-SW50 (Advanced)
VA-SW60 (Enterprise)
 • Please visit "sanyosecurity.com" for further details.

Microsoft and Windows are either registered trademarks or trademarks of Microsoft Corporation in the United States and/or other countries. Intel and Pentium are trademarks or registered trademarks of Intel Corporation or its subsidiaries in the U.S. and other countries. All other trademarks are the property of their respective owners.

Notes:

- Frame rates are variable dependent upon network line conditions and PC performance.
- Because products and software described in this brochure are subject to continuous improvement; SANYO reserves the right to modify product specifications, functions and design without notice.
- Screen images are simulated.
- Comparative images are representations only.

Caution: Please consult the instruction manual to ensure safe and proper operation of the product.



Digital System Company of SANYO Electric Co., Ltd. obtained Quality Management System ISO 9001 and Environmental Management System ISO 14001 certifications.

Distributed by:

SANYO

SANYO Electric Co., Ltd.
 Digital System Company
<http://www.sanyosecurity.com>

©2008 SANYO Printed in Japan 2008.11 MA
 SMS168