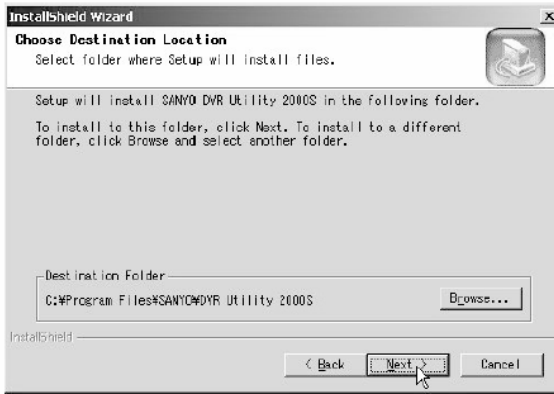


1 Insert the supplied CD-ROM in the CD drive and double-click "Sanyo Client.exe".

The installer runs.

2 Confirm the installation destination folder on the "Choose Destination Location" screen and click [Next].

To change the installation destination folder, click [Browse] and select a folder.



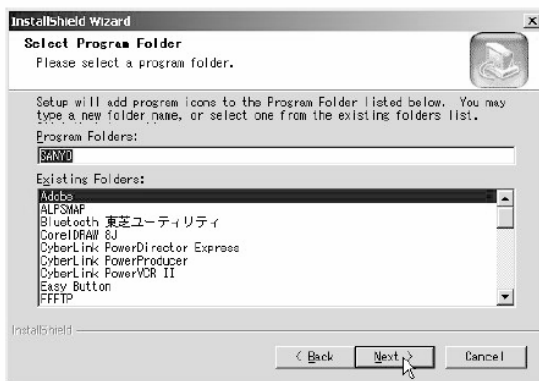
3 Select the setup type on the [Setup Type] screen and click [Next].



- In general, select "**Typical**". Depending on the performance of the PC the program may not operate. In that case, re-install "**Light**".

4 Confirm the program folder in the "Select Program Folder" screen and click [Next].

To install to a different program folder, input the folder name in the box directly or select a folder from the [Existing Folders] list.



5 The software starts installing.

The progress of the installation is displayed on the "Setup Status" screen.

6 Installation is complete.

Once the installation is complete, the "DVR Utility 2000S" shortcut icon is displayed on the desktop.



Double-click this icon to start the software.