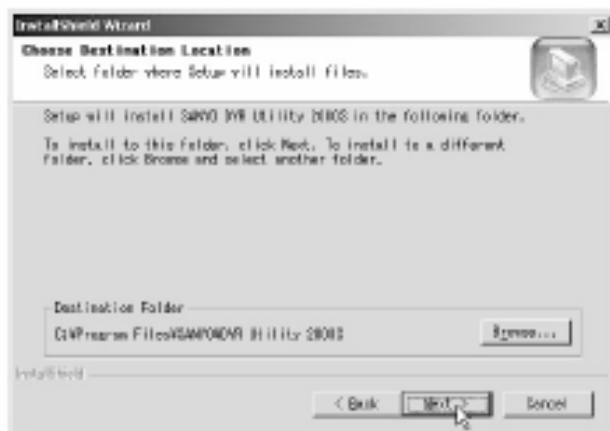


# Installing “SANYO DVR Utility 2004

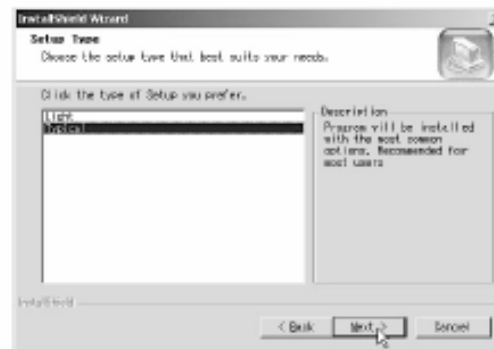
Install using the interactive screen.

- 1 Insert the supplied CD-ROM in the CD drive and double-click "Sanyo Client.exe".  
The installer runs.

- 2 Confirm the installation destination folder on the "Choose Destination Location" screen and click [Next].  
To change the installation destination folder, click [Browse] and select a folder.

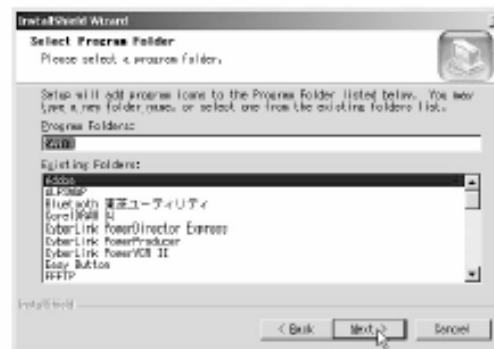


- 3 Select the setup type on the [Setup Type] screen and click [Next].



- In general, select "Typical". Depending on the performance of the PC the program may not operate. In that case, re-install "Light".

- 4 Confirm the program folder in the "Select Program Folder" screen and click [Next].  
To install to a different program folder, input the folder name in the box directly or select a folder from the [Existing Folders] list.



- 5 The software starts installing.  
The progress of the installation is displayed on the "Setup Status" screen.
- 6 Installation is complete.  
Once the installation is complete, the "DVR Utility 2004S" shortcut icon is displayed on the desktop.



Double-click this icon to start the software.